

# ADDENDUM TO THE 2010 ANNUAL REPORT

STATISTICAL TABLES  
TABLEAUX STATISTIQUES  
CUADROS ESTADÍSTICOS

Joint Advisory Group on the International Trade Centre/Groupe consultatif commun du Centre du commerce international/  
Grupo Consultivo Mixto del Centro de Comercio Internacional  
Forty-fifth session/Quarante-cinquième session/Cuadragésima quinta reunión  
Geneva, June 2011/Genève, juin 2011/Ginebra, junio de 2011

These statistical tables provide information on total expenditures of ITC itemized by source of fund and by region. The document also lists the various projects for which allocations were made during the year, publications that were produced, and the origin and geographical distribution of consultants employed.  
All references to dollars (\$) are to United States of America dollars.

---

Les tableaux statistiques fournissent des informations sur l'ensemble des dépenses de l'ITC par source de financement et par région. Le document contient également la liste des projets, les dépenses et allocations effectuées au cours de l'année par projet ainsi que la liste des publications et la distribution des consultants recrutés par l'ITC, par origine et région d'affectation.

Le terme dollar (\$) signifie dans tous les cas le dollar des États-Unis d'Amérique.

---

Estos cuadros estadísticos dan información sobre los gastos totales del ITC por fuente de financiación y por región. El documento también contiene la lista de los proyectos, el monto de financiación de cada uno durante el año, así como la lista de las publicaciones realizadas y la lista de consultores por nacionalidad y zona geográfica de afectación. Toda mención de dólar (\$) se refiere al dólar de los Estados Unidos de América.

Digital images/Images numériques/Imágenes digitales: © ITC  
June 2011, juin 2011, junio de 2011  
Original: English/français/español

© International Trade Centre 2011/Centre du commerce international/Centro de Comercio Internacional

ITC/AG(XLV)/239/Add.

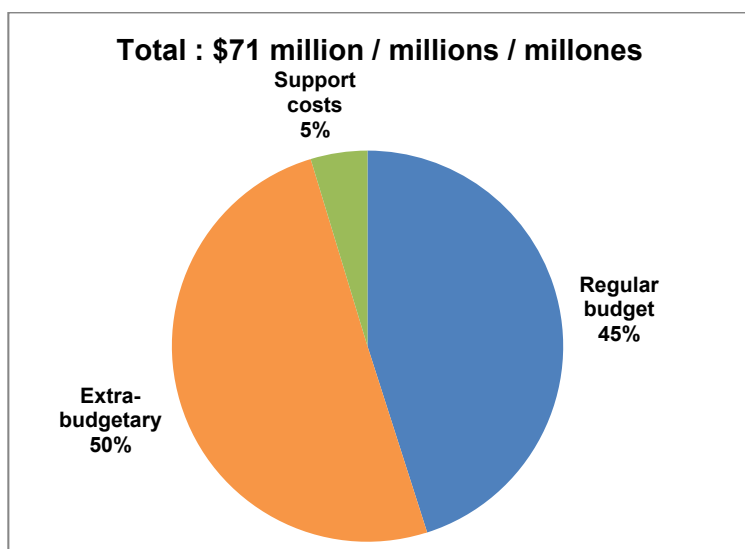
**Table / Tableau / Cuadro**

2010 at a glance	1
2010 en un coup d'œil	
2010 en una mirada	
1. Total expenditure from regular and extrabudgetary resources, 2005 – 2010	3
Dépenses totales couvertes par les ressources ordinaires et hors budget, 2005 – 2010	
Gastos totales cubiertos con recursos ordinarios y extrapresupuestarios, 2005 – 2010	
2. Total technical cooperation expenditure on LDCs, SIDs, SSA, LLDCs (gross), 2010	
Total des dépenses en coopération technique pour les PMA, PEID, SSA, PDSL, 2010	
Gastos globales de cooperación técnica para los PMA, PEID, SSA, PDSL, 2010	
3. Status of donor contributions in 2010 for technical cooperation projects as of 31 December 2010	4
État des contributions des donateurs en 2010 pour les projets de coopération technique au 31 décembre 2010	
Situación de las contribuciones de donantes en 2010 para proyectos de cooperación técnica al 31 de diciembre de 2010	
4. Project allocations, 2010	5
Affectations par projet, 2010	
Asignaciones por proyecto, 2010	
5. Distribution of assignments by nationality and gender of experts, 2010	13
Distribution des missions par nationalité et sexe des experts, 2010	
Distribución de las misiones por nacionalidad y género de los expertos, 2010	
6. Breakdown of assignments by country category, 2010	16
Répartition des missions par catégorie de pays, 2010	
Repartición de las misiones por categoría de país, 2010	
7. Distribution of assignments by region of assignment, 2010	17
Distribution des missions par région d'affectation 2010	
Distribución de las misiones por región de afectación, 2010	



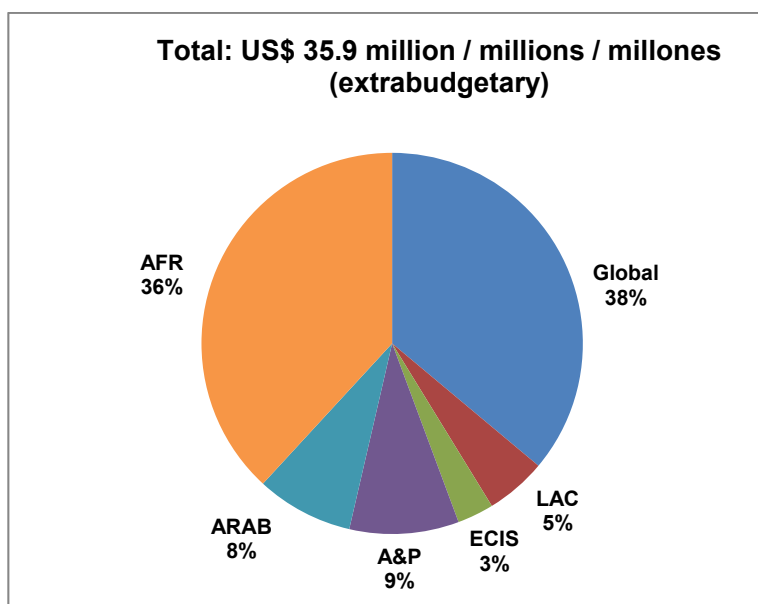
2010 at a glance  
 2010 en un coup d'œil  
 2010 en una mirada

**Total expenditure by source of fund (regular budget, extrabudgetary resources, support costs)**  
**Dépenses totales par source de financement (budget ordinaire, ressources hors budget, dépenses d'appui)**  
**Gastos totales por fuente de financiación (presupuesto ordinario, recursos extrapresupuestarios, gastos de apoyo)**



Regular budget / Budget ordinaire / Presupuesto ordinario  
 Extrabudgetary resources / Ressources hors budget / Recursos extrapresupuestarios  
 Support costs / Dépenses d'appui / Gastos de apoyo

**Technical cooperation expenditure by region in %**  
**Dépenses en coopération technique par région en %**  
**Gastos de cooperación técnica por región en %**



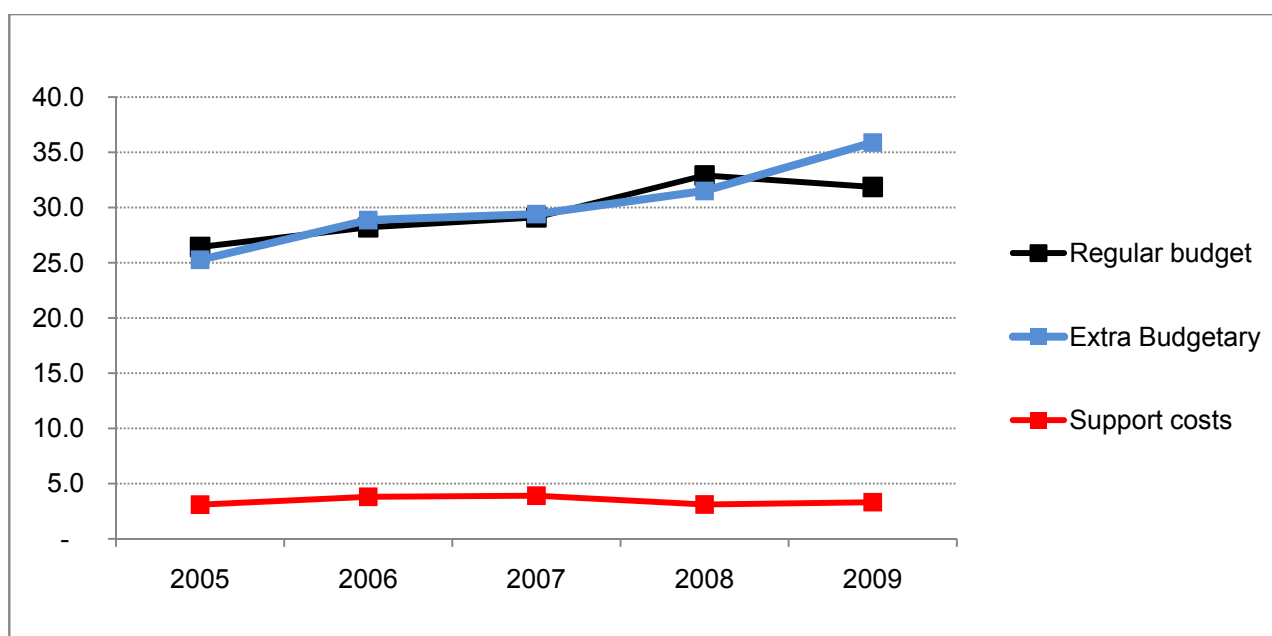
AFR Africa / Afrique / África  
 A&P Asia and the Pacific / Asie et le Pacifique / Asia y el Pacífico  
 ARBS Arab States / États arabes / Estados Árabes  
 ECIS Europe and the CIS / Europe et la CEI / Europa y la CEI  
 LAC Latin America and the Caribbean / Amérique latine et les Caraïbes / América Latina y el Caribe

Table 1 / Tableau 1 / Cuadro 1

**Total expenditure from regular and extrabudgetary resources, 2005 – 2010**  
**Dépenses totales couvertes par les ressources ordinaires et hors budget, 2005 – 2010**  
**Gastos totales cubiertos con recursos ordinarios y extrapresupuestarios, 2005 – 2010**

(US\$ millions / \$E.-U. millions / \$EE.UU. millones)

SOURCE OF FUND	2005	2006	2007	2008	2009	2010
Regular budget	26.9	26.4	28.2	29.1	32.9	31.9
Extrabudgetary	22.1	25.3	28.9	29.4	31.5	35.9
Support costs	3.1	3.1	3.8	3.9	3.1	3.3
<b>Total</b>	<b>52.1</b>	<b>54.8</b>	<b>60.9</b>	<b>62.4</b>	<b>67.5</b>	<b>71.0</b>



Source of fund / Source de financement / Fuente de financiación  
 Regular budget / Budget ordinaire / Presupuesto ordinario  
 Extrabudgetary resources / Ressources hors budget / Recursos extrapresupuestarios  
 Support costs / Dépenses d'appui / Gastos de apoyo

Table 2 / Tableau 2 / Cuadro 2

**Total technical cooperation expenditure on LDCs, SIDS, SSA, LLDCs (gross), 2010**  
**Total des dépenses en coopération technique pour les PMA, PEID, SSA, PDSL (brut), 2010**  
**Gastos globales de cooperación técnica para los PMA, PEID, SSA, PDSL (bruto), 2010**

Type of project / Type de projet / Tipo de proyecto	Expenditure / Dépenses / Gastos (US\$ million)
Country projects / Projets nationaux / Proyectos nacionales	11.1
Regional projects, estimates / Projets régionaux, estimations / Proyectos regionales, estimaciones	5.3
Global solutions / Solutions globales / Soluciones globales	0.2
Millennium Development Goals / Objectifs du Millénaire pour le développement / Objetivos de Desarrollo del Milenio	2.0
Total expenditure on LDCs, SIDS, SSA, LLDCs (excluding XB staff and associate experts) / Dépenses totales pour les PMA, PEID, SSA, PDSL (à l'exclusion du personnel des projets extrabudgétaires et des experts associés) / Gastos totales para los PMA, PEID, SSA, PDSL (excluidos gastos de personal y expertos asociados sufragados con recursos extrapresupuestarios)	18.6
Total technical cooperation expenditure, ITC (excluding XB staff and associate experts) / Dépenses totales de coopération technique, ITC (à l'exclusion du personnel des projets extrabudgétaires et des experts associés) / Gastos totales de cooperación técnica, ITC (excluidos gastos de personal y expertos asociados sufragados con recursos extrapresupuestarios)	33.8
Share of LDCs, SIDS, SSA, LLDCs / Part des PMA, PEID, SSA, PDSL / Parte correspondiente de los PMA, PEID, SSA, PDSL	55%

LDCs	Least developed countries
PMA	Pays les moins avancés
PMA	Países menos adelantados
SIDS	Small island developing States
PEID	Petits États insulaires en développement
PEID	Pequeños Estados insulares en desarrollo
SSA	Sub-Saharan Africa
	Afrique sub-saharienne
	África Subsahariana
LLDCs	Landlocked developing countries
PDSL	Pays en développement sans littoral
PDSL	Países en desarrollo sin litoral

Table 3 / Tableau 3 / Cuadro 3

Status of donor contributions in 2010 for technical cooperation projects as of 31 December 2010  
 État des contributions des donateurs en 2010 pour les projets de coopération technique  
 au 31 décembre 2010  
 Situación de las contribuciones de donantes en 2010 para proyectos de cooperación técnica  
 al 31 de diciembre de 2010

Source of funds / Source de financement / Fuente de financiación	Allocation / Affectation / Asignación (US\$'000)
<b>TOTAL</b>	<b>40,412</b>
<b>ITC trust fund / Fonds d'affectation spéciale de l'ITC / Fondos fiduciarios del ITC - Window I</b>	<b>15,831</b>
Canada	930
Denmark	2,297
Finland	2,177
Germany	2,535
Ireland	999
New Zealand	180
Norway	2,465
Sweden	4,248
<b>ITC trust fund / Fonds d'affectation spéciale de l'ITC / Fondos fiduciarios del ITC - Window II</b>	<b>24,581</b>
<b>One UN projects / Projets Une ONU / Proyectos Una ONU</b>	<b>1,072</b>
Mozambique	190
UNDP - Spain/MDGF Achievement Fund	882
<b>Bilateral Trust funds – TOTAL / Fonds d'affectation bilaterale – TOTAL / Fondos fiduciarios – TOTAL</b>	<b>20,909</b>
African Management Services Company	217
Cambodia	39
Canada	6,180
China	90
European Commission	5,937
France	131
International Labour Organization	5
Italy	140
Japan	226
Malaysian Herbal Corporation Sdn. Bhd.	20
Mali	98
New Zealand	415
Oman Centre for Investment Promotion and Export Development	47
Organisation internationale de la Francophonie	161
South Africa	136
Sudan	47
Switzerland	2,715
United Kingdom	3,465
USAID	45
World Bank	740
World Trade Organization	55
<b>Associate experts – TOTAL / Experts associés – TOTAL / Expertos asociados – TOTAL</b>	<b>668</b>
Finland	147
France	192
Germany	329
<b>Revolving funds / Fonds renouvelables / Fondos giratorios</b>	<b>537</b>
<b>UNDP / PNUD</b>	<b>643</b>

Table 4 / Tableau 4 / Cuadro 4

**Project allocations, 2010**  
**Affectations par projet, 2010**  
**Asignaciones por proyecto, 2010**

	Project No.	Source of funds	2010 (US\$)
<b>AFRICA / AFRIQUE / AFRICA</b>			
<b>Benin / Bénin / Benin</b>			
Benin - Promotion du tourisme communautaire pour le développement intégré	BEN/07/083A	IF	120,605
Benin - Renforcement des capacités des institutions d'appui au commerce et des entreprises pour le développement des exportations	BEN/07/140A	IF	65,032
<b>Cape Verde / Cap-Vert / Cabo Verde</b>			
Cape Verde – One UN trade and productive capacities development	CVI/1A/01A	UNDP - Spain/MDGF Achievement Fund	91,028
<b>Central African Republic / République centrafricaine / República Centroafricana</b>			
RCA - Diagnostique du potentiel d'exportation	CAF/10/849A	IF	74,074
<b>Chad / Tchad / Chad</b>			
Chad - Renforcement des capacités nationales dans la mise en oeuvre du Cadre intégré	CHD/06/873A	IF	204,918
<b>Democratic Republic of the Congo / République démocratique du Congo / República Democrática del Congo</b>			
Amélioration de l'environnement des affaires en RDC- Volet 1	DRC/09/001A	UNDP	230,739
Accès au financement des MPME - Volet 2	DRC/09/002A	UNDP	135,877
<b>Côte d'Ivoire / Côte d'Ivoire / Côte d'Ivoire</b>			
Côte d'Ivoire - Appui institutionnel et opérationnel pour l'amélioration du cadre des affaires et le renforcement de la compétitivité des exportations	IVC/75/25A	European Union	490,933
<b>Ethiopia / Éthiopie / Etiopia</b>			
WTO accession - Ethiopia	ETH/58/08A	Spain	176,102
Ethiopian coffee quality project	ETH/61/86A	Switzerland	226,644
<b>Ghana / Ghana / Ghana</b>			
Ghana - Pilot project fashion supply chain	GHA/61/126A	Switzerland	44,720
<b>Guinea / Guinée / Guinea</b>			
Guinée - Renforcement des capacités en matière de commerce international agroalimentaire	GUI/63/01A	Agence française de développement - AFD	189,887
<b>Kenya / Kenya / Kenya</b>			
Netherlands Trust Fund (NTF II) - Kenya	KEN/47/111A	Netherlands	105,098
<b>Madagascar / Madagascar / Madagascar</b>			
Madagascar - Amélioration de l'encadrement juridique pour le commerce international	MAG/27/09A	France	11,117
<b>Malawi / Malawi / Malawi</b>			
SADC Supply chain and logistics programme - Malawi	MLW/17/03A	Belgium - Flemish Government	257,296
<b>Mali / Mali / Malí</b>			
Mali - Promotion commerciale et de diversification des marchés des exportations horticoles	MLI/19/01A	Mali	56,418
Mali - Étude de faisabilité relative à la création d'une agence de développement des exportations	MLI/19/02A	Mali	11,181

	Project No.	Source of funds	2010 (US\$)
<b>Mozambique / Mozambique / Mozambique</b>			
Mozambique One UN - Strengthening cultural and creative industries and inclusive policies	MOZ/1A/01A	UNDP - Spain/MDGF Achievement Fund	79,546
Mozambique - Capacity building for effective trade policy formulation and management	MOZ/6A/01A	Mozambique One UN	159,201
Mozambique - Business Environment Support and Trade Facilitation Programme (BESTF) - Strengthening IPEX	MOZ/70/01A	UNIDO	276,291
<b>Nigeria / Nigéria / Nigeria</b>			
Standards and trade development facility, Nigeria - SPS capacity building for sesame seeds and sheanut butter exports	NIR/98/02A	World Trade Organization (WTO)	13,728
<b>Sao Tome and Principe / Sao Tomé-et-Príncipe / Santo Tomé y Príncipe</b>			
Sao Tome and Principe - Supporting an enabling environment for business development	STP/08/592A	IF	123,733
<b>Senegal / Sénégal / Senegal</b>			
Netherlands Trust Fund (NTF II) - Senegal	SEN/47/109A	Netherlands	122,720
<b>Sierra Leone / Sierra Leone / Sierra Leona</b>			
Sierra Leone - Capacity building for trade policy formulation and trade information access	SIL/08/188A	IF	107,099
Sierra Leone - Support to the Export Development and Investment Corporation (SLEDIC)	SIL/95/10A	World Bank	84,287
<b>South Africa / Afrique du Sud / Sudáfrica</b>			
SADC Supply chain and logistics programme - South Africa	SAF/17/05A	Belgium - Flemish Government	158,469
Netherlands Trust Fund (NTF II) - South Africa	SAF/47/112A	Netherlands	136,186
<b>Tanzania, United Republic of / Tanzanie, République-Unie de / Tanzania, República Unida de</b>			
Standards and trade development facility, Tanzania UR - Supporting the Horticulture development council	URT/98/02A	World Trade Organization (WTO)	14,246
<b>Uganda / Ouganda / Uganda</b>			
Netherlands Trust Fund (NTF II) - Uganda	UGA/47/110A	Netherlands	209,017
<b>Zambia / Zambie / Zambia</b>			
Zambia - Access to finance for agribusiness SMEs	ZAM/1B/01A	African Management Services Company (ATMS/AMSCO)	77,935
<b>Regional</b>			
SADC Supply Chain and Logistics Programme - Coordination	INT/17/02A	Belgium - Flemish Government	21,529
PACT 2 – ECCAS - Coordination	INT/20/103C	Canada	368,057
PACT2 - ECOWAS - Coordination	INT/20/104D	Canada	401,049
PACT 2 - ECOWAS - Regional trade information networks	INT/20/126A	Canada	28,925
ACCESS! for African Businesswomen in International Trade – phase II	RAF/20/101A	Canada	398,973
PACT 2 -ECCAS - Improved technical capacities and RBM operations	RAF/20/109C	Canada	36,566
PACT 2 - ECOWAS - Improved technical capacities and RBM operations	RAF/20/110D	Canada	96,719
PACT 2 - ECCAS - Market analysis and sector prioritization	RAF/20/112C	Canada	21,401
PACT 2 - ECOWAS - Market analysis and sector prioritization	RAF/20/113D	Canada	38,468
PACT 2 - ECCAS - Sector strategy	RAF/20/115C	Canada	169,000
PACT 2 - ECCAS Networks of national and regional TSIs	RAF/20/118C	Canada	119,102
PACT 2 - ECOWAS Networks of national and regional TSIs	RAF/20/119D	Canada	88,019

	Project No.	Source of funds	2010 (US\$)
PACT 2 - ECCAS Regional private sector Apex bodies for public-private dialogue	RAF/20/121C	Canada	51,127
PACT 2 - ECOWAS Regional private sector Apex bodies for public-private dialogue	RAF/20/122D	Canada	12,488
PACT 2 - ECCAS Appui juridique pour les entreprises de l'Afrique occidentale et centrale	RAF/20/123C	Canada	118,852
PACT 2 - ECCAS Regional trade information networks	RAF/20/125A	Canada	87,978
ACCESS II - Business Counselling for women entrepreneurs	RAF/20/133B	Canada	8,008
Ethical fashion - Strengthening the fair labour and environmental approach	RAF/39/04A	Japan	58,656
Capacity building: TSI strategy design capability	RAF/47/105A	Netherlands	12,709.77
<b>ARAB STATES / ÉTATS ARABES / ESTADOS ÁRABES</b>			
<b>Algeria / Algérie / Argelia</b>			
Enhancing Arab Capacity for Trade (EnACT) - Algeria	RAB/20/132A	Canada	265,037
<b>Egypt / Egypte / Egipto</b>			
Enhancing Arab Capacity for Trade (EnACT) - Egypt	RAB/20/133A	Canada	82,600
<b>Jordan / Jordanie / Jordania</b>			
Enhancing Arab Capacity for Trade (EnACT) - Jordan	RAB/20/134A	Canada	229,600
<b>Morocco / Maroc / Marruecos</b>			
Enhancing Arab Capacity for Trade (EnACT) - Morocco	RAB/20/135A	Canada	486,600
<b>Oman / Oman / Omán</b>			
Oman - Centre for Investment Promotion and Export Development (OCIPED) feasibility study	OMA/7A/01A	OCIPED	51,935
<b>Tunisia / Tunisie / Túnez</b>			
Enhancing Arab Capacity for Trade (EnACT) - Tunisia	RAB/20/136A	Canada	200,707
Tunisia - Strengthening the training department of École Supérieure de Commerce de Tunis (ESCT)	TUN/36/05A	IDB	9,023
Projet de promotion des exportations tunisiennes	TUN/61/120A	Switzerland	433,005
<b>Yemen / Yémen / Yemen</b>			
Netherlands Trust Fund (NTF II) - Yemen	YEM/47/113A	Netherlands	72,757
<b>Regional</b>			
Enhancing Arab Capacity for Trade (EnACT) - Coordination	RAB/20/131A	Canada	690,549
<b>ASIA AND THE PACIFIC / ASIE ET LE PACIFIQUE / ASIA Y EL PACÍFICO</b>			
<b>Bangladesh / Bangladesh / Bangladesh</b>			
Bangladesh leather service centre for export development	BGD/37/17A	Italy	6,653
Bangladesh leather service centre for export development II	BGD/37/19A	Italy	359,011
Netherlands Trust Fund (NTF II) - Bangladesh	BGD/47/114A	Netherlands	209,636
<b>Cambodia / Cambodge / Camboya</b>			
Cambodia - Sector-wide silk project	CMB/08/690A	IF	37,562
Cambodia - Support to the trade promotion department of the Ministry of Commerce	CMB/09/483A	UNDP	148,003
Cambodia - Partnership for gender equity	CMB/09/795A	UNDP	46,609
Cambodia - Feasibility study for assisting rice millers' access to finance	CMB/3A/02A	Cambodia	34,513
Cambodia - Sector-wide silk project	CMB/49/03A	New Zealand	12,502
Cambodia - Sector-wide silk project II	CMB/49/05A	New Zealand	220,208
Promoting the voice of the private sector in Aid for Trade	CMB/61/125A	Switzerland	9,240
Cambodia - Sector-wide silk project, product and market development	CMB/61/87Z	Switzerland	60,131

	Project No.	Source of funds	2010 (US\$)
<b>China / Chine / China</b>			
Certified trade advisers programme (CTAP) - China	CPR/22/05A	China	101,544
<b>Malaysia / Malaisie / Malasia</b>			
Malaysia - Strengthening the training department of Malaysia External Trade Development Corporation (MATRADE)	MAL/36/08A	IDB	7,932
Malaysia - GLOBINMED business information on traditional and complementary medicine	MAL/9A/01A	Malaysian Herbal Corporation Sdn. Bhd.	17,699
<b>Maldives / Maldives / Maldivas</b>			
Maldives - Trade information system	MDV/08/419A	IF	118,963
<b>Nepal / Népal / Nepal</b>			
Nepal - Trade-related capacity building	NEP/09/770A	UNDP	45,265
<b>Viet Nam / Viet Nam / Viet Nam</b>			
Viet Nam One UN - Green production and trade to increase income and employment opportunities for rural poor	VIE/1A/01A	UNDP - Spain/MDGF Achievement Fund	417,833
<b>EUROPE AND THE CIS / EUROPE ET LA CEI / EUROPA Y LA CEI</b>			
<b>Georgia / Géorgie / Georgia</b>			
Georgia - Capacity building in market analysis and trade information; trade development programme preparation	GEO/5A/01A	The Ministry of Foreign Affairs of Romania	84,036
<b>Kyrgyzstan / Kirghizistan / Kirguistán</b>			
Trade promotion in Kyrgyzstan	KYR/61/123A	Switzerland	601,380
<b>Tajikistan / Tadjikistan / Tayikistán</b>			
Trade promotion in Tajikistan	TAJ/61/124A	Switzerland	413,826
<b>Turkey / Turquie / Turquía</b>			
Turkey - Strengthening the training department of the export promotion centre IGEME	TUR/36/06A	IDB	5,614
<b>Regional</b>			
Eastern Europe - Export development	RER/61/109A	Switzerland	60,856
<b>LATIN AMERICA AND THE CARIBBEAN / AMERIQUE LATINE ET LES CARAIBES / AMÉRICA LATINA Y EL CARIBE</b>			
<b>Brazil / Brésil / Brasil</b>			
Apex Brasil - Advisory services to upgrade APEX trade intelligence unit	BRA/65/01A	Apex-Brasil	146,796
Apex Brasil - Foreign trade training	BRA/65/02A	Apex-Brasil	70,709
Apex Brasil - Market Profile Methodology Program (Track 3)	BRA/65/02B	Apex-Brasil	69,440
Apex Brasil - Enterprise competitiveness (Track 4)	BRA/65/02C	Apex-Brasil	129,632
<b>Haiti / Haïti / Haití</b>			
Haiti - Amélioration de l'encadrement juridique multilatéral	HAI/09/262A	UNDP	64,278
<b>Peru / Pérou / Perú</b>			
Peru - Programme development and support of the Peruvian national export plan	PER/61/122A	Switzerland	34,899
Peru - Strengthening the export competitiveness of women entrepreneurs in the textile and clothing sector in Arequipa	RLA/58/07A	Spain	163,262
<b>Regional</b>			
CARIFORUM creative industries promotion	RLA/75/26A	European Union	191,632

	Project No.	Source of funds	2010 (US\$)
<b>INTERREGIONAL ACTIVITIES (by programme) / ACTIVITÉS INTERRÉGIONALES (par programme) / ACTIVIDADES INTERREGIONALES (por programa)</b>			
<b>Institutional infrastructure including business organizations, for trade promotion and export development / Infrastructure institutionnelle, y compris les organisations professionnelles, pour la promotion du commerce et le développement des exportations / Infraestructura institucional, comprendidas las organizaciones comerciales, para la promoción del comercio y el desarrollo de las exportaciones</b>			
Associate Expert - Mr. Kai Suelzle - DPS/OD	INT/08/11A	Germany	24,080
Associate Expert - Oliver von Hagen - MAR/DMD	INT/08/12A	Germany	154,175
Associate Expert - Tobias Schiedermaier - OED/ODED	INT/08/13A	Germany	114,751
Associate Expert - Andrea Santoni, DTSS/BAS	INT/09/11A	Italy	73,371
Associate Expert - Raphael Dard, DTSS	INT/07/08A	France	16,000
Associate Expert - Ms. M. Arvonen - BPP/RPG	INT/26/01A	Finland	113,217
Associate Expert - Alexander Riveros - DBIS/BE	INT/07/11A	France	54,516
2010 World Export Development Forum - MOFCOM (China)	INT/22/06A	China	73,718
PACCIA/PACT 2 UMBRELLA	INT/20/100A	Canada	883,098
PACT 2 - COMESA - Coordination	INT/20/102B	Canada	397,215
Legal aspects of foreign trade	INT/27/07A	France	49,605
Conseiller en gestion des approvisionnements importés	INT/27/08A	France	63,527
Expansion du commerce intra- et inter-régional pour les pays francophones du Mekong, de la Commission de l'Océan Indien, de la CEMAC et de l'UEMOA	INT/28/07A	Organisation internationale de la Francophonie	43,200
Expansion du commerce intra- et inter-régional pour les pays francophones du Mekong, de la Commission de l'Océan Indien, de la CEMAC et de l'UEMOA	INT/28/09A	Organisation internationale de la Francophonie	108,223
Fond d'integration des pays moins avances(PMA) de la Francophonie	INT/28/04A	Organisation internationale de la Francophonie	7,564.02
Netherlands Trust Fund (NTF II) - Management	INT/47/108A	Netherlands	391,735
Capacity building among SMEs, TSIs & Govt to promote export of services from selected African Countries	INT/47/78A	Netherlands	5,836.49
Supply chain management training and professional certification (MLS-SCM)	INT/61/105A	Switzerland	785,688
Global information system for organic market and production data	INT/61/106A	Switzerland	74,690
Trade for sustainable development (T4SD)	INT/61/127A	Switzerland	47,424
Fairtrade Labelling Organizations International (FLO) partnership	INT/61/128A	Switzerland	11,066
Women and Trade Core Staff	INT/71/09A	United Kingdom	19,897
Organizational strengthening of the International Trade Centre	INT/71/01A	United Kingdom	305,314
Non-tariff measures - increasing transparency and understanding	INT/71/02A	United Kingdom	664,926
Women and trade - Empowering women in the coffee sector	INT/71/03A	United Kingdom	255,285
Women and Trade: Improving gender mainstreaming at ITC	INT/71/04A	United Kingdom	208,314
Women and trade - Linking women business enterprises to corporate and institutional buyers	INT/71/05A	United Kingdom	275,577
Women and trade - Building the capacity to address gender based trade constraints	INT/71/06A	United Kingdom	221,356
IT&S/elearning	INT/71/07A	United Kingdom	26,549
DFID - Gender training	INT/71/08A	United Kingdom	6,675
ACP Programme, R 1.0 - Coordination Team	INT/75/24A	European Union	854,607
All ACP agricultural commodities development programme - Agri-food & agri-business sector strategy development	INT/75/24B	European Union	640,733
All ACP agricultural commodities development programme - Cotton sector strategy development	INT/75/24C	European Union	283,736
All ACP agricultural commodities development programme - Agri-food & agri-business sector strategy implementation	INT/75/24D	European Union	858,654

	Project No.	Source of funds	2010 (US\$)
All ACP agricultural commodities development programme - Cotton sector strategy implementation	INT/75/24E	European Union	1,245,864
Associate Expert - Ms. M. Bladvall - DTSS/BAS	INT/80/03A	Sida	7,534
MLS-SCM Revolving Fund	INT/R1/01A	RF/MLS-SCM	227,366
Revolving fund for market analysis and research	INT/R2/01A	RF/MAR	1,134,036
Trade information services revolving fund	INT/R3/01A	RF/TIS	70,914
ECS Revolving Fund	INT/R4/01A	Revolving Fund – ECS	64,889
Revolving Fund on the 'World Trading System'	INT/R5/01A	RF/WTS	11,755
TSI Revolving Fund	INT/R6/01A	RF/BG	56,432
MDS Revolving Fund	INT/R8/02A	RF/SC	47,022
PACT 2 - COMESA Improved technical capacities and RBM operations	RAF/20/108B	Canada	42,938
PACT 2 - COMESA Market analysis and sector prioritization	RAF/20/111B	Canada	78,002
PACT 2 - COMESA Sector strategy	RAF/20/114B	Canada	225,572
PACT 2 - ECOWAS Sector strategy	RAF/20/116D	Canada	133,695
PACT 2 - COMESA Networks of national and regional TSIs	RAF/20/117B	Canada	96,511
PACT 2 - COMESA Regional private sector Apex bodies for public-private dialogue	RAF/20/120B	Canada	261,521
PACT 2 - COMESA Regional trade information networks	RAF/20/124B	Canada	273,797
PACT 2 - COMESA Leather sector regional export development	RAF/20/127B	Canada	442,180
ACCESS II - Export training course for African women in international trade	RAF/20/132A	Canada	252,193
Ethical fashion East Africa	RAF/28/08A	Organisation internationale de la Francophonie	19,831
Senegal, Gambia and Guinea-Bissau - Groundnut sector revitalization	RAF/36/04A	IDB	70,032
Pacific private sector engagement in trade and PACER plus	RAS/4A/02A	Australia	178,239
<b>Others / Autres / Otros</b>			
<b>Global Trust Fund / Fonds global d'affectation spéciale / Fondo Fiduciario Global</b>			
Programme development activities	INT/W3/**	GTF	48,680
Formulation of tailor made programmes and other country/region specific activities	INT/W4/**	GTF	64,399
<b>ITC Trust Fund / Fonds global d'affectation spéciale / Fondo Fiduciario Global - Window I</b>			
DBIS: GTF core and base staff 2010	INT/U1/01A	ITF Window 1	1,341,485
DMD ITF/W1 staff and project allocation	INT/U1/02A	ITF Window 1	1,636,447
2010 BPP ITF/W1 core and base staff (ex INTW183)	INT/U1/03A	ITF Window 1	1,208,115
OED: ITF/W1 core and base staff	INT/U1/04A	ITF Window 1	961,653
Process improvement DPS/OD	INT/U1/05A	ITF Window 1	67,735
HR administration	INT/U1/05B	ITF Window 1	136,941
IT Service desk assistance - XB	INT/U1/05C	ITF Window 1	136,219
DPS/ITS: ITF/W1 IT&S strategy implementation, staff + non staff 2010	INT/U1/06A	ITF Window 1	698,776
DPS/CSS: ITF/W1 Base Legal Services	INT/U1/07A	ITF Window 1	188,746
Legal support for project implementation	INT/U1/07B	ITF Window 1	73,994
Trade for sustainable development (T4SD)	INT/U1/09A	ITF Window 1	1,015,161
South East Asia - Pilot for a regional SME finance and knowledge centre	INT/U1/10A	ITF Window 1	88,988

	Project No.	Source of funds	2010 (US\$)
Uruguay - Advisory to upgrade Ministry of Foreign Affairs' trade intelligence platform	INT/U1/11A	ITF Window 1	7,486
Communications support to extrabudgetary projects (ex INTW3182)	INT/U1/13A	ITF Window 1	207,625
World trade promotion organization (WTPO) awards and conference	INT/U1/14A	ITF Window 1	24,466
Project development support for LDCs under EIF	INT/U1/15A	ITF Window 1	93,858
Trade, climate change and environment programme	INT/U1/16A	ITF Window 1	287,199
Technical assistance programme: Support to export development of Indian natural medicinal products (ex INTW4125)	INT/U1/17A	ITF Window 1	13,436
Follow up TRTA programme in Pakistan (ex INTW3144)	INT/U1/18A	ITF Window 1	26,781
Ethical fashion - East Africa	INT/U1/19A	ITF Window 1	533,903
Business and trade policy	INT/U1/20A	ITF Window 1	387,088
WTO accession - Pacific LDCs	INT/U1/20B	ITF Window 1	85,933
WTO accession - Laos	INT/U1/20C	ITF Window 1	117,919
WTO accession - LDCs in early phase of accession	INT/U1/20D	ITF Window 1	121,239
Export quality management product portfolio and services expansion - partnership with ISO	INT/U1/21A	ITF Window 1	37,792
Consultant on Gender in Trade programme development	INT/U1/22A	ITF Window 1	133,021
Export-led & tourism-led poverty reduction programmes	INT/U1/23A	ITF Window 1	865,064
Market News Service (MNS)	INT/U1/24A	ITF Window 1	267,557
ECS marketing	INT/U1/25A	ITF Window 1	50,272
Export strategy design and management	INT/U1/26A	ITF Window 1	217,551
E-Learning solutions and trade intelligence portal development	INT/U1/27A	ITF Window 1	83,047
Needs Assessment/Travel	INT/U1/28A	ITF Window 1	149,443
Non-tariff measures - increasing transparency and understanding	INT/U1/29A	ITF Window 1	156,703
World trade promotion organisations conference and awards	INT/U1/30A	ITF Window 1	284,922
Training on foreign trade representation	INT/U1/31A	ITF Window 1	128,129
CIS regional trade development - consultation and preparation of a concept paper	INT/U1/32A	ITF Window 1	52,635
Africa regional public-private forum on aid for trade	INT/U1/33A	ITF Window 1	150,147
Strengthening the pineapple export value chain in selected West African countries - Programme development	INT/U1/34A	ITF Window 1	125,394
Trade leaders of Africa - training in market analysis and research	INT/U1/35A	ITF Window 1	192,392
Deployment of the export marketing and branding practice	INT/U1/36A	ITF Window 1	153,680
Strengthening the pineapple export value chain in selected West African countries - Trade at hand	INT/U1/37A	ITF Window 1	103,662
Strengthening the pineapple export value chain in selected West African countries - Business generation	INT/U1/38A	ITF Window 1	39,791
Strengthening the pineapple export value chain in selected West African countries - Trade Finance	INT/U1/39A	ITF Window 1	73,172
Upgrading enterprise competitiveness diagnostic tools for exporters	INT/U1/40A	ITF Window 1	38,546
ITC Africa network of enterprise level trainers and advisers	INT/U1/41A	ITF Window 1	134,371
Trade support institutions benchmarking scheme	INT/U1/42A	ITF Window 1	51,403
Trade facilitation - Facilitating women informal cross border trade in Uganda	INT/U1/43A	ITF Window 1	225,178
Trade support institutions capacity building modules	INT/U1/44A	ITF Window 1	24,909
ITC's client relationship management system	INT/U1/45A	ITF Window 1	67,546
World Export Development Forum	INT/U1/46A	ITF Window 1	189,832

	Project No.	Source of funds	2010 (US\$)
OLAC Regional Office in Mexico	INT/U1/47A	ITF Window 1	20,680
ITC Client Survey 2010	INT/U1/48A	ITF Window 1	33,904
2010 OED travel	INT/U1/49A	ITF Window 1	40,668
2010 DPS travel	INT/U1/50A	ITF Window 1	17,515
LoanCom maintenance	INT/U1/51A	ITF Window 1	40,684

Source of funds / Source de financement / Fuente de financiación:

- EC: European Commission / Commission européenne/ Comisión Europea
- GTF: Global Trust Fund / Fonds global d'affectation spéciale (FGAS) / Fondo Fiduciario Global (FFG)
- IDB: Islamic Development Bank / Banque Islamique de Développement / Banco Islámico de Desarrollo
- IF: Integrated Framework / Cadre intégré / Marco Integrado
- ITF: International Trade Centre Trust Fund / Fonds d'affectation spéciale du Centre du commerce international/ Fondos fiduciarios del Centro de Comercio Internacional
- Sida: Swedish International Development Cooperation Agency / Agence suédoise de coopération pour le développement international / Agencia Sueca de Cooperación para el Desarrollo Internacional
- UNDP: United Nations Development Programme / Programme des Nations Unies pour le développement (PNUD) / Programa de las Naciones Unidas para el Desarrollo (PNUD)
- UNIDO: United Nations Industrial Development Organization / Organisation des Nations Unies pour le développement industriel (ONUDI) / Organización de las Naciones Unidas para el Desarrollo Industrial (ONUDI)

Table 5 / Tableau 5 / Cuadro 5

Distribution of assignments by nationality and gender of experts, 2010  
 Distribution des missions par nationalité et sexe des experts, 2010  
 Distribución de las misiones por nacionalidad y género de los expertos, 2010

From / Origine / Procedentes de	2010					
	TOTAL		WOMEN / FEMMES / MUJERES		MEN / HOMMES / HOMBRES	
	Assign-ments	W / M	Assign-ments	W / M	Assign-ments	W / M
<b>DEVELOPING AND TRANSITION COUNTRIES / PAYS EN DÉVELOPPEMENT ET EN TRANSITION / PAÍSES EN DESARROLLO Y EN TRANSICIÓN</b>						
<b>Africa / Afrique / África</b>	<b>120</b>	<b>237.93</b>	<b>33</b>	<b>91.53</b>	<b>87</b>	<b>146.40</b>
Benin / Bénin	6	10.45	-	-	6	10.45
Botswana	1	3.70	-	-	1	3.70
Burkina Faso	7	17.55	2	4.50	5	13.05
Cameroon / Cameroun / Camerún	7	17.40	4	13.45	3	3.95
Central African Republic / République centrafricaine / República Centroafricana	1	0.60	-	-	1	0.60
Congo	3	3.25	-	-	3	3.25
Democratic Republic of the Congo / République démocratique du Congo / República Democrática del Congo	8	19.15	2	11.85	6	7.30
Côte d'Ivoire	4	11.00	2	3.50	2	7.50
Ethiopia / Ethiopie / Etiopía	8	15.10	-	-	8	15.10
Gabon / Gabón	2	3.95	1	2.75	1	1.20
Gambia / Gambie	2	1.65	-	-	2	1.65
Ghana	4	6.45	1	2.00	3	4.45
Guinea-Bissau / Guinée-Bissau	1	0.50	-	-	1	0.50
Kenya	11	18.53	1	5.50	10	13.03
Liberia / Libéria	3	5.80	-	-	3	5.80
Madagascar	1	0.30	1	0.30	-	-
Malawi	2	6.05	-	-	2	6.05
Mali / Malí	5	16.05	-	-	5	16.05
Mauritius / Maurice / Mauricio	1	0.10	-	-	1	0.10
Nigeria / Nigéria	3	8.40	1	6.20	2	2.20
Rwanda	5	8.90	-	-	5	8.90
Sao Tome and Principe / Sao Tomé-et-Principe / Santo Tomé y Príncipe	1	0.05	-	-	1	0.05
Senegal / Sénégal	2	2.00	1	1.50	1	0.50
South Africa / Afrique du Sud / Sudáfrica	9	22.85	3	13.45	6	9.40
Tanzania, United Republic of / Tanzanie, République-Unie de / Tanzania, República Unida de	2	4.00	-	-	2	4.00
Uganda / Ouganda	13	17.80	9	14.95	4	2.85
Zambia / Zambie	4	10.18	2	7.05	2	3.13
Zimbabwe	4	6.18	3	4.53	1	1.65

W / M W / M = Work months / Mois de travail / Meses de trabajo

From / Origine / Procedentes de	2010					
	TOTAL		WOMEN / FEMMES / MUJERES		MEN / HOMMES / HOMBRES	
	Assignments	W / M	Assignments	W / M	Assignments	W / M
<b>Asia and the Pacific / Asie et le Pacifique / Asia y el Pacífico</b>	<b>72</b>	<b>155.60</b>	<b>28</b>	<b>68.20</b>	<b>44</b>	<b>87.40</b>
Bangladesh	5	26.00	-	-	5	26.00
Cambodia / Cambodge / Camboya	12	28.50	4	14.00	8	14.50
China / Chine	2	2.28	-	-	2	2.28
India / Inde	15	33.33	4	7.93	11	25.40
Malaysia / Malaisie / Malasia	3	7.03	3	7.03	-	-
Nepal / Népal	2	1.50	-	-	2	1.50
Pakistan / Pakistán	1	1.00	-	-	1	1.00
Philippines / Filipinas	9	12.55	7	11.05	2	1.50
Singapore / Singapour / Singapur	3	1.55	1	0.50	2	1.05
Solomon Islands / Iles Salomon / Islas Salomón	3	5.63	-	-	3	5.63
Sri Lanka	3	2.50	-	-	3	2.50
Thailand / Thaïlande / Tailandia	7	21.30	3	17.25	4	4.05
Tonga	2	6.60	2	6.60	-	-
Viet Nam	5	5.85	4	3.85	1	2.00
<b>Arab States / États Arabes / Estados Árabes</b>	<b>28</b>	<b>58.25</b>	<b>5</b>	<b>8.03</b>	<b>23</b>	<b>50.23</b>
Algeria / Algérie / Argelia	3	3.50	-	-	3	3.50
Egypt / Egipto	3	2.33	2	2.13	1	0.20
Jordan / Jordania	4	14.50	2	2.00	2	12.50
Lebanon / Liban / Líbano	2	8.93	-	-	2	8.93
Morocco / Maroc / Marruecos	8	13.20	1	3.90	7	9.30
Tunisia / Tunisie / Túnez	8	15.80	-	-	8	15.80
<b>Europe and the CIS / Europe et la CEI / Europa y la CEI</b>	<b>18</b>	<b>34.25</b>	<b>8</b>	<b>15.20</b>	<b>10</b>	<b>19.05</b>
Azerbaijan / Azerbaïdjan / Azerbaiyán	1	4.00	1	4.00	-	-
Czech Republic / République tchèque / República Checa	1	2.30	-	-	1	2.30
Hungary / Hongrie / Hungría	3	2.95	1	0.75	2	2.20
Kyrgyzstan / Kirghizistan / Kirguistán	1	7.00	-	-	1	7.00
Malta / Malte	1	1.50	-	-	1	1.50
Republic of Moldova / République de Moldova, / República de Moldova,	2	1.15	-	-	2	1.15
Romania / Roumanie / Rumania	7	10.35	5	8.95	2	1.40
Russian Federation / Fédération de Russie / Federación de Rusia	1	1.50	1	1.50	-	-
Turkey / Turquie / Turquía	1	3.50	-	-	1	3.50
<b>Latin America and the Caribbean / Amérique latine et les Caraïbes / América Latina y el Caribe</b>	<b>37</b>	<b>86.70</b>	<b>18</b>	<b>43.70</b>	<b>19</b>	<b>43.00</b>
Argentina / Argentine	6	10.23	5	5.60	1	4.63
Brazil / Brésil / Brasil	8	33.28	5	21.80	3	11.48
Chile / Chili	1	1.00	-	-	1	1.00
Colombia / Colombie	4	4.40	1	1.50	3	2.90
Costa Rica	1	1.50	1	1.50	-	-
Grenada / Grenade / Granada	2	6.50	1	3.25	1	3.25
Guatemala	1	1.80	-	-	1	1.80
Haiti	1	2.40	-	-	1	2.40
Jamaica / Jamaïque	2	1.50	-	-	2	1.50
Mexico / Mexique / México	2	5.00	1	2.50	1	2.50
Peru / Pérou / Perú	6	13.30	1	1.75	5	11.55
Uruguay	3	5.80	3	5.80	-	-

From / Origine / Procedentes de	2010					
	TOTAL		WOMEN / FEMMES / MUJERES		MEN / HOMMES / HOMBRES	
	Assignments	W / M	Assignments	W / M	Assignments	W / M
<b>DEVELOPED COUNTRIES / PAYS DÉVELOPPÉS / PAÍSES DESARROLLADOS</b>						
<b>Total</b>	<b>294</b>	<b>605.36</b>	<b>98</b>	<b>221.50</b>	<b>196</b>	<b>383.86</b>
Australia / Australie	18	38.75	3	4.00	15	34.75
Belgium / Belgique / Bélgica	6	10.20	2	1.15	4	9.05
Canada	24	49.98	15	34.33	9	15.65
Denmark / Danemark / Dinamarca	4	3.00	4	3.00	-	-
France / Francia	51	135.18	14	35.10	37	100.08
Germany / Allemagne / Alemania	12	26.90	3	11.75	9	15.15
Greece / Grèce / Grecia	1	2.20	-	-	1	2.20
Ireland / Irlande / Irlanda	1	1.00	-	-	1	1.00
Israel / Israël	4	2.30	-	-	4	2.30
Italy / Italie / Italia	17	45.30	4	21.65	13	23.65
Netherlands / Pays-Bas / Países Bajos	27	43.16	5	12.25	22	30.91
New Zealand / Nouvelle-Zélande / Nueva Zelandia	10	23.70	6	14.15	4	9.55
Spain / Espagne / España	6	13.40	2	8.70	4	4.70
Sweden / Suède / Suecia	7	11.03	-	-	7	11.03
Switzerland / Suisse / Suiza	16	48.73	7	16.45	9	32.28
United Kingdom / Royaume-Uni / Reino Unido	55	90.88	11	20.00	44	70.88
United States of America / États-Unis d'Amérique / Estados Unidos de América	35	59.68	22	38.98	13	20.70
<b>TOTAL, ALL REGIONS</b>	<b>569</b>	<b>1,178.09</b>	<b>190</b>	<b>448.15</b>	<b>379</b>	<b>729.94</b>

Table 6 / Tableau 6 / Cuadro 6

**Breakdown of assignments by country category, 2010**  
**Répartition des missions par catégorie de pays, 2010**  
**Repartición de las misiones por categoría de país, 2010**

Country category / Catégorie de pays / Categoría de países	TOTAL			
	Assignments	%	W / M	%
<b>WOMEN / FEMMES / MUJERES</b>	<b>190</b>	<b>33.39</b>	<b>448.15</b>	<b>38.04</b>
Developing and transition countries / Pays en développement et en transition / Países en desarrollo y en transición	86	15.11	217	18.42
Developed countries / Pays développés / Países desarrollados	104	18.28	231.20	19.63
<b>MEN / HOMMES / HOMBRES</b>	<b>379</b>	<b>66.61</b>	<b>729.94</b>	<b>61.96</b>
Developing and transition countries / Pays en développement et en transition / Países en desarrollo y en transición	177	31.11	339	28.75
Developed countries / Pays développés / Países desarrollados	202	35.50	391.26	33.21
<b>TOTAL</b>	<b>569</b>	<b>100.00</b>	<b>1,178.09</b>	<b>100.00</b>
Developing and transition countries / Pays en développement et en transition / Países en desarrollo y en transición	263	46.22	556	47.16
Developed countries / Pays développés / Países desarrollados	306	53.78	622.46	52.84

W / M      W / M = Work months / Mois de travail / Meses de trabajo

Table 7 / Tableau 7 / Cuadro 7

Distribution of assignments by region of assignment, 2010 /  
 Distribution des missions par région d'affectation, 2010 /  
 Distribución de las misiones por región de afectación, 2010

Origin / Origine / Origen			2010						
			TOTAL	Region of assignment / Région d'affectation / Region de afectacion					
				Inter- regional	ARBS	AFR	A&P	ECIS	LAC
Africa / Afrique / África	TOTAL	Assignment W / M	120 237.93	58 102.68	2 5.85	58 117.2	1 10.25	- -	1 2
	WOMEN	Assignment W / M	33 91.53	13 29.8	- -	18 49.48	1 10.25	- -	1 2
	MEN	Assignment W / M	87 146.4	45 72.88	2 5.85	40 67.68	- -	- -	- -
Asia and the Pacific / Asie et le Pacifique / Asia y el Pacífico	TOTAL	Assignment W / M	72 155.6	23 49.58	1 3.5	12 21.35	31 71.05	3 4	2 6.13
	WOMEN	Assignment W / M	28 68.2	10 29.98	- -	4 7.85	11 23.45	1 0.8	2 6.13
	MEN	Assignment W / M	44 87.4	13 19.6	1 3.5	8 13.5	20 47.6	2 3.2	- -
Arab States / États Arabes / Estados Árabes	TOTAL	Assignment W / M	28 58.25	7 14.15	18 41.4	3 2.7	- -	- -	- -
	WOMEN	Assignment W / M	5 8.03	1 0.13	4 7.9	- -	- -	- -	- -
	MEN	Assignment W / M	23 50.23	6 14.03	14 33.5	3 2.7	- -	- -	- -
Europe and the CIS / Europe et la CEI / Europa y la CEI	TOTAL	Assignment W / M	18 34.25	8 12.25	2 4.5	2 5.85	1 1.5	5 10.15	- -
	WOMEN	Assignment W / M	8 15.2	3 6.6	2 4.5	1 2.35	- -	2 1.75	- -
	MEN	Assignment W / M	10 19.05	5 5.65	- -	1 3.5	1 1.5	3 8.4	- -
Latin America and the Caribbean / Amérique latine et les Caraïbes / América Latina y el Caribe	TOTAL	Assignment W / M	37 86.7	30 70.5	- -	1 1.5	- -	- -	6 14.7
	WOMEN	Assignment W / M	18 43.7	15 39.2	- -	1 1.5	- -	- -	2 3
	MEN	Assignment W / M	19 43	15 31.3	- -	- -	- -	- -	4 11.7
Developed countries / Pays développés / Países desarrollados	TOTAL	Assignment W / M	294 605.36	195 431.79	25 59.1	49 80.33	10 14.1	8 10.9	7 9.15
	WOMEN	Assignment W / M	98 221.5	62 155.43	8 18.25	19 35.68	3 5.5	2 1.25	4 5.4
	MEN	Assignment W / M	196 383.86	133 276.36	17 40.85	30 44.65	7 8.6	6 9.65	3 3.75
<b>TOTAL</b>		Assignment W / M	<b>569</b> <b>1,178.09</b>	<b>321</b> <b>680.94</b>	<b>48</b> <b>114.4</b>	<b>125</b> <b>228.9</b>	<b>43</b> <b>96.9</b>	<b>16</b> <b>25.05</b>	<b>16</b> <b>31.98</b>
<b>WOMEN</b>		Assignment W / M	<b>190</b> <b>448.15</b>	<b>104</b> <b>261.13</b>	<b>14</b> <b>30.65</b>	<b>43</b> <b>96.85</b>	<b>15</b> <b>39.2</b>	<b>5</b> <b>3.8</b>	<b>9</b> <b>16.53</b>
<b>MEN</b>		Assignment W / M	<b>379</b> <b>729.94</b>	<b>217</b> <b>419.81</b>	<b>34</b> <b>83.7</b>	<b>82</b> <b>132</b>	<b>28</b> <b>57.7</b>	<b>11</b> <b>21.25</b>	<b>7</b> <b>15.45</b>

Interregional / Interrégional  
 Assignments / Missions / Misiones  
 W / M = Work months / Mois de travail / Meses de trabajo  
 Women / Femmes / Mujeres  
 Men / Hommes / Hombres

A&P: Asia and the Pacific / Asie et le Pacifique / Asia y el Pacífico  
 AFR: Africa / Afrique / África  
 ARBS: Arab States / États arabes / Estados Árabes  
 ECIS: Europe and the CIS / Europe et la CEI / Europa y la CEI  
 LAC: Latin America and the Caribbean / Amérique latine et les Caraïbes /  
 América Latina y el Caribe

The International Trade Centre (ITC) is the joint agency of the World Trade Organization and the United Nations.

**Street address:** ITC,  
54-56, rue de Montbrillant,  
1202 Geneva, Switzerland

**Postal address:** ITC,  
Palais des Nations,  
1211 Geneva 10, Switzerland

**Telephone:** +41-22 730 0111

**Fax:** +41-22 733 4439

**E-mail:** [itcreg@intracen.org](mailto:itcreg@intracen.org)

**Internet:** <http://www.intracen.org>

