



International
Trade
Centre

EXPORT IMPACT
FOR GOOD

ITC Financial Information

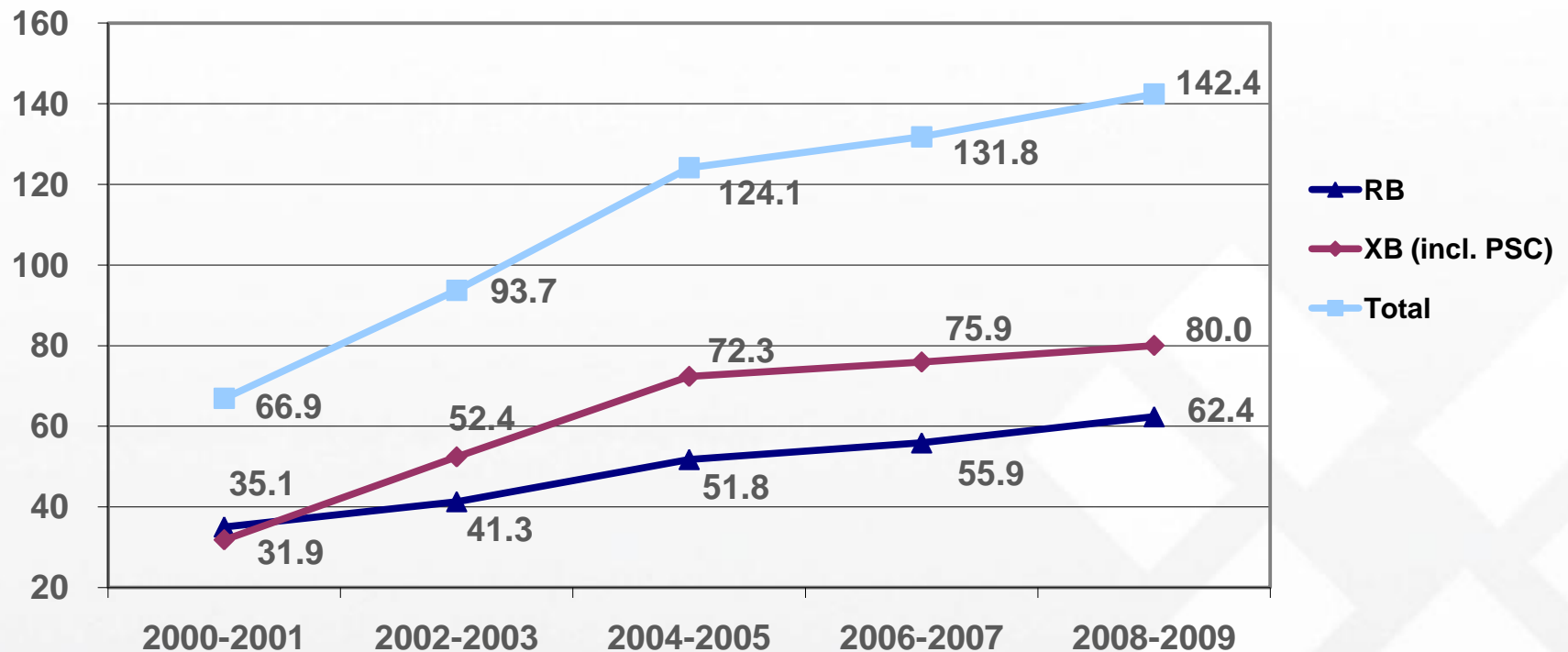
Eva K. Murray,
Director, Division of Programme Support



Evolution of ITC's biennial Appropriation/Income

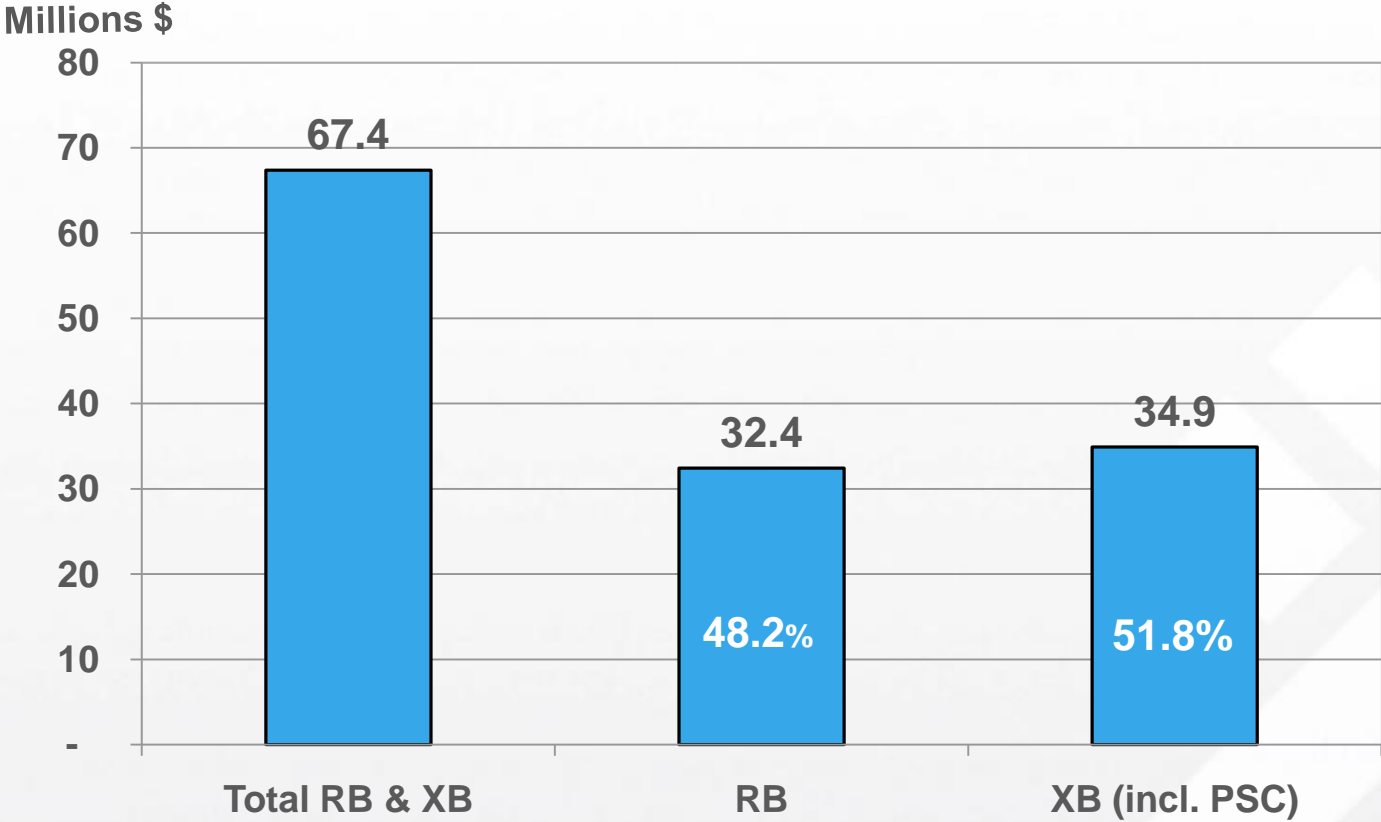
(2008-2009: actual as of 30 Nov 2009 + XB Projection for Dec 2009)

Millions \$



Total Regular Budget (RB) & Extra-budgetary (XB) Projected Expenditures for 2009

(actual as of 30 Nov 2009 + Projection for Dec 2009)

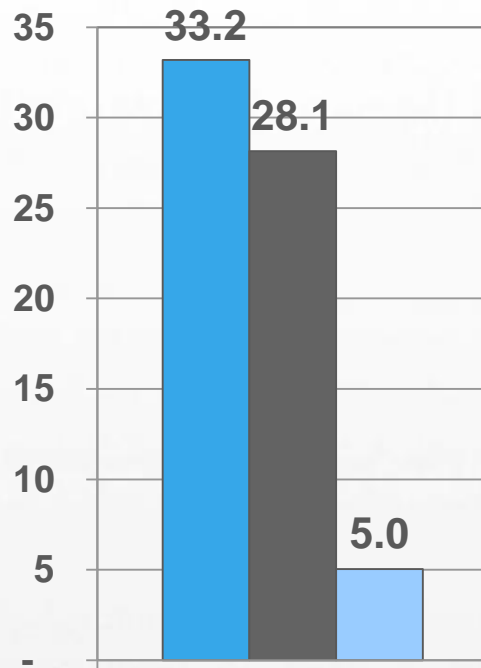


2009 Cash Available, Expenditures & Balances

(as of 30 November 2009)

Regular Budget

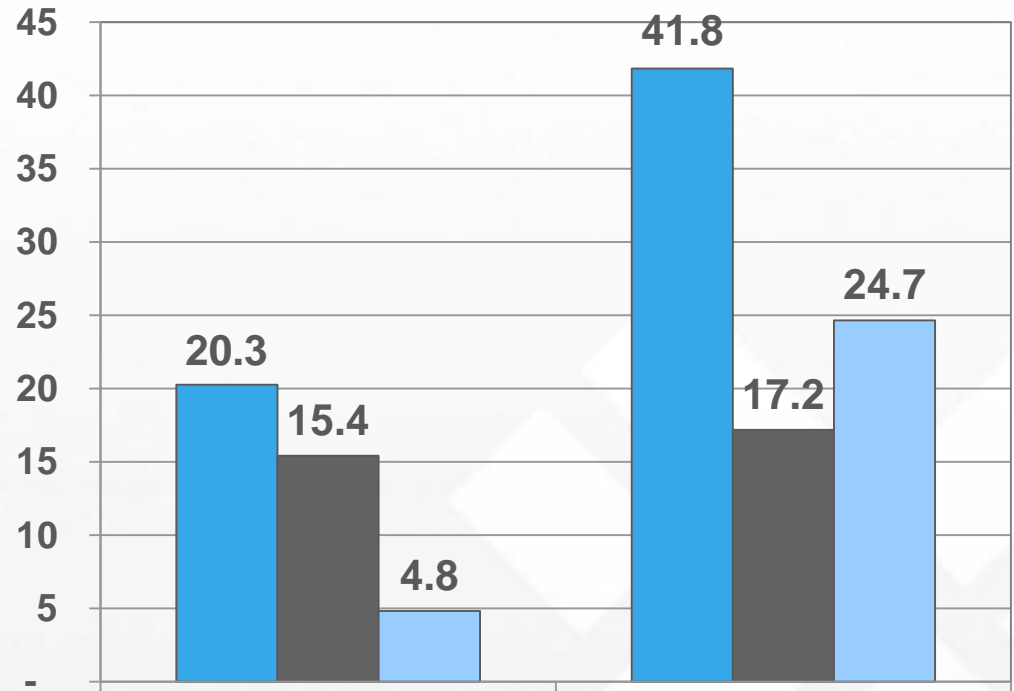
Millions \$



Regular Budget

ITC Trust Fund

Millions \$



Unearmarked ITF/GTF

Earmarked/Bilaterals

■ Cash available ■ Expenditures ■ Balance

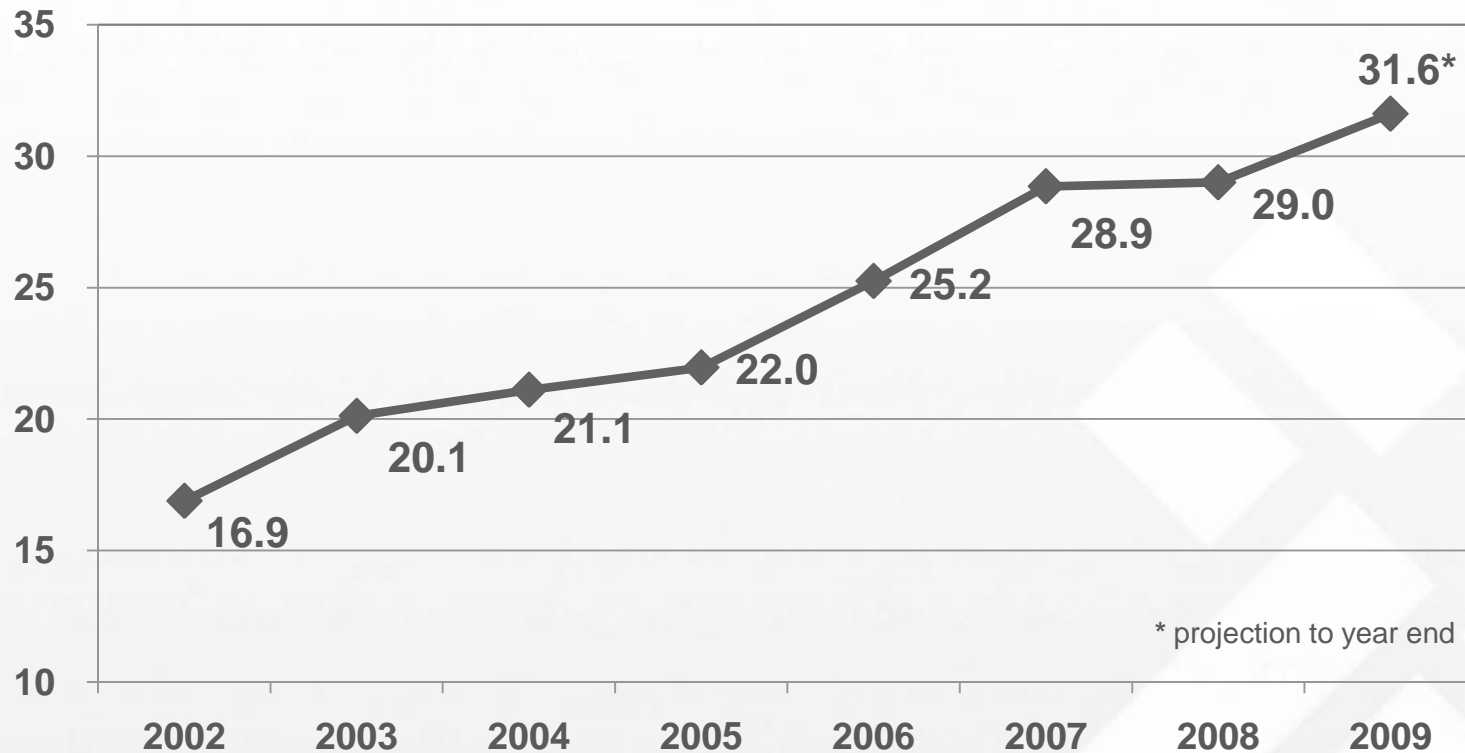


EXPORT IMPACT
FOR GOOD

Historical Level of Delivery of Technical Assistance by ITC (2002-2009)

(excluding programme support costs)

Millions \$



* projection to year end